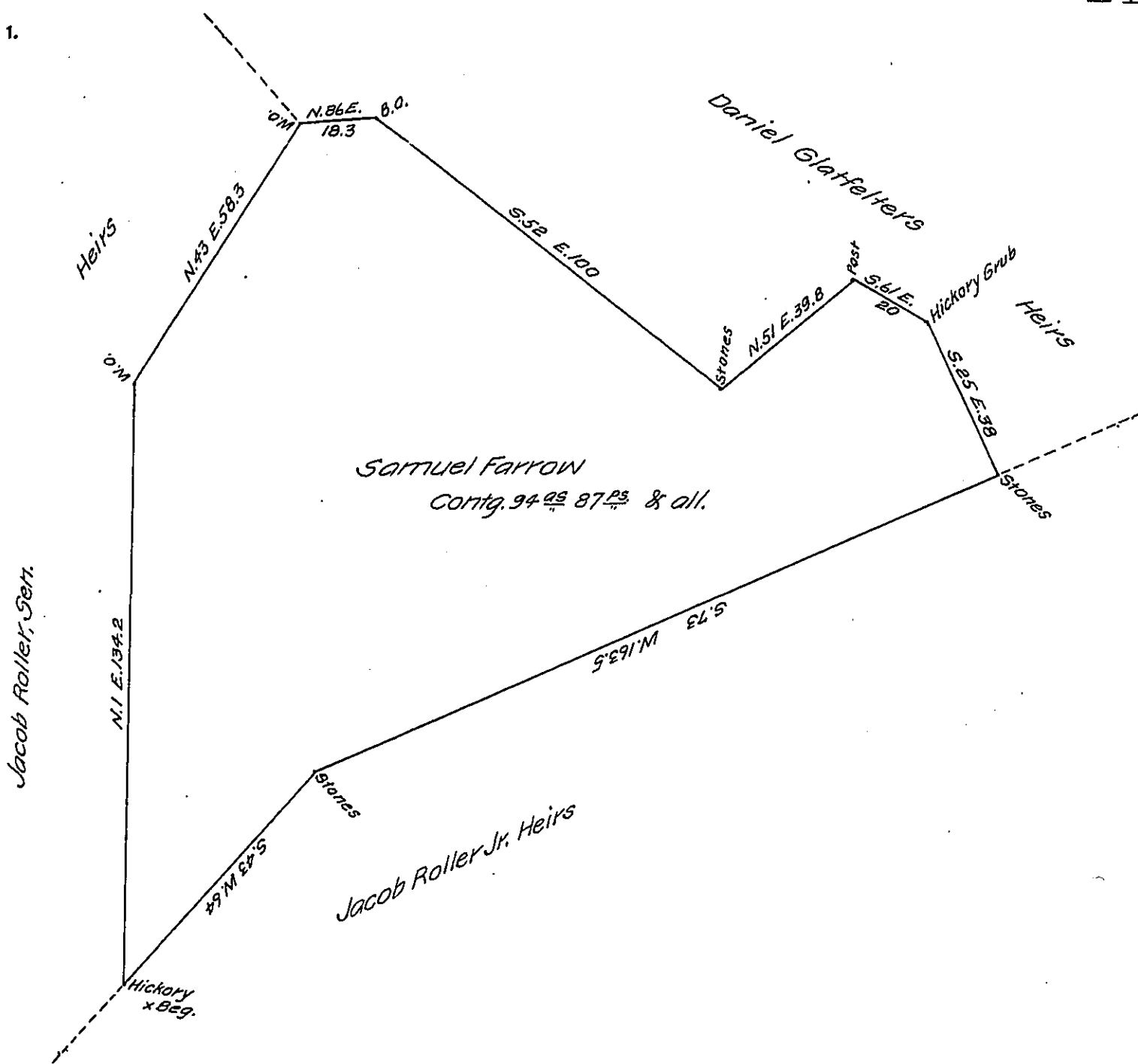


FORM NO 1.



Situate in Dover Township in the County of York Containing 94 <sup>49</sup>/<sub>87 1/2</sub> & allowance Originally Surveyed in pursuance of a Application No 4835, dated 11<sup>th</sup> of March 1768, granted to Samuel Farrow, Protracted from a old deed at the request of Daniel Snellpecker the present owner, and returned for confirmation October 27<sup>th</sup> 1864.

To James P. Barr, Esq.  
Surveyor General.

Per G.S. Gerber  
for  
Benj<sup>d</sup>. Leese, D.S.

IN TESTIMONY that the above is a copy of the original remaining on file in the Department of Internal Affairs of Pennsylvania, made conformably to an Act of Assembly approved the 16th day of February, 1833, I have hereunto set my Hand and caused the Seal of said Department to be affixed at Harrisburg, this Sixteenth day of December 1907.

*Henry Howell*  
Secretary of Internal Affairs.